

# MATERIAL HANDLING

**CABOT SHIPPING SUPPLIES LTD.**  
 106 Burbridge Avenue  
 Dartmouth, Nova Scotia  
 B3B 0G7

**TOLL FREE** 1-800-565-0606  
**HRM** (902) 468-2057  
**FAX** (902) 468-2251  
**EMAIL** sales@cabotss.com

**DELIVERY IN 7 TO 10 DAYS!**

## MATERIAL HANDLING & WAREHOUSE EQUIPMENT PROMOTION



### DELUXE HAND TRUCKS



- Constructed of 1" round 14-gauge steel tubing
- Transport short to tall loads easily
- P handle ideal for one hand control
- Strong 12" x 14" x 3/16" thick nose plate
- Double welded 3/16" x 1-1/2" cross bars
  - Add a folding nose extension to be able to transport larger loads
    - Two 10" full pneumatic wheels
  - Durable Kleton blue enamel finish



Model No.	Description	Dimensions W" x H"	Promo Price
<b>ML321</b>	Lo-Boy Hand Truck	23 x 50	<b>209.00</b>
<b>ML322</b>	Hi-Boy Hand Truck	23 x 72	<b>258.00</b>

### Z3400 SERIES SAFETY GLASSES

- Sporty and translucent temple design
- Streamline temple arm for best comfort
- Dual-injected rubber at the end of the temple that will not peel off easily
- Anatomically-shaped nose-piece that will adapt to most face contours
- Standard(s) Met: CSA Z94.3, ANSI Z87+
- Lens Tint: Grey/Smoke
- Lens Coating: Anti-Scratch, Polarized



Model No.	Promo Price
<b>SGW885</b>	<b>23.80</b>



### 20" BOX FAN

- 3-speed control
- Fully assembled and ready to use
- Five slim blades
- Designed to efficiently circulate airflow to reach desired comfort levels with a three speed-settings feature
  - Top-mounted controls



Model No.	Promo Price
<b>EA527</b>	<b>45.20</b>

### 20" HIGH VELOCITY PEDESTAL FAN

- 3-speed, 120 V/60 Hz, 1/5 HP motor
- All-metal construction
- Chrome grill, black painted base
- Head tilting capability of 360°
- Adjustable height
- 6' SJT type power cord



Model No.	High	CFM Med	Low	Promo Price
<b>EA289</b>	5950	4550	3850	<b>163.00</b>





EA551

## COMMERCIAL OSCILLATING PEDESTAL FANS

- 3-speed push button front control
  - Adjustable height
- Rotating or fixed air direction
  - Easy to assemble



Model No.	Dia. "	Min. Height "	Max. Height "	Promo Price
EA658	16	41	49	36.35
EA551	18	45	52	52.25

## HIGH VELOCITY FLOOR FANS

- 3-speed, 120 V/60 Hz, 1/4 HP motor
  - All-metal construction
    - 3-prong plug with ground industrial wire
    - Rotates up for vertical airflow

EA290



EA528



Model No.	Dia. "	High	CFM Med	Low	Promo Price
-----------	--------	------	---------	-----	-------------

### BLACK FINISH

EA528	16	2370	1950	1560	73.25
-------	----	------	------	------	-------

### CHROME FINISH

EA290	18	4725	3850	2975	109.00
-------	----	------	------	------	--------



EA666

EA667



## HEAVY-DUTY OSCILLATING FANS

- 3-speed, 1/3 HP
  - All-metal construction
- Pedestal model features adjustable height and heavy-duty round base for added stability
  - 9.8' SJT power cord
  - Diameter: 30"
  - Open motor



Model No.	Description	High	CFM Med	Low	Promo Price
EA666	Pedestal	13 200	7321	4758	727.00
EA667	Wall Mount	13 400	7805	5070	591.00

## OSCILLATING PEDESTAL FAN

- All-metal construction
  - 6.5' SJT power cord
  - Features adjustable height and a heavy-duty round base for added stability
- Open motor & direct drive
  - Horse Power: 1/16 HP
  - Motor: 120 V/60 Hz
  - No. of Speeds: 3



Model No.	Dia.	High	CFM Med	Low	Promo Price
-----------	------	------	---------	-----	-------------

EB239	22	4500	3700	2900	164.00
-------	----	------	------	------	--------

## 24" ROLL-ABOUT FAN

- 3-speed, 1/5 HP, 120 V motor
- Cart-mounted fan for increased air circulation and optimal mobility
- Can be tilted/positioned to maximize ventilation
- Cart and frame configuration provides stable quiet operation
- 9.8' SJT power cord
- Open motor
- Non-Oscillating



Model No.	High	CFM Med	Low	Promo Price
EA476	10760	7770	7040	390.00

## OSCILLATING DESK FANS WITH PUSH BUTTONS

- 3-speed push button control
- Rotating or fixed air direction
- Portable and easy to assemble
- Tangle resistant base

EA305



Model No.	Diameter "	Promo Price
-----------	------------	-------------

EA305	12	35.30
EA306	16	40.15

## FOLDABLE PEDESTAL FAN

- Fan can be used as a pedestal fan or a floor fan
- Fully assembled fan
- All-metal construction painted black & chrome with aluminum blades
- Equipped with two casters for easy maneuverability
- HP: 1/4
- No. of Speeds: 3
- Drive System: Direct Drive
- Non-Oscillating
- Open Motor; 120 V/60Hz
- Power Cord: 9.8'



Model No.	Dia."	High	CFM Med	Low	Promo Price
EB116	24	7000	4500	3500	469.00

## LIGHT INDUSTRIAL AIR CIRCULATING FANS

- All-metal construction, with densely chrome-plated guard
- Can be used in oscillating or non-oscillating mode
- 6' SJT power cord
- Open motor
- Voltage: 120 V

EA284



Model No.	Description	HP	High	CFM Med	Low	Promo Price
<b>OSCILLATING, 3 SPEEDS</b>						
EA282*	26" Pedestal	1/4	7525	6060	4050	285.00
EA283*	30" Pedestal	1/3	8775	7500	6780	387.00
EA284	26" Wall Mount	1/4	7525	6060	4050	268.00
EA654	30" Wall Mount	1/3	8775	7500	6780	280.00

### NON OSCILLATING, 2 SPEEDS

EA657*	26" Pedestal	1/4	7700	-	6060	380.00
EA571*	30" Pedestal	1/3	8000	-	7000	290.00
EA655	26" Wall Mount	1/4	7700	-	6060	238.00
EA656	30" Wall Mount	1/3	8000	-	7000	252.00

\*Features adjustable height and a heavy-duty round base for added stability

## MOBILE 3-IN-1 AIR CONDITIONER



- 3-in-1 system (A/C, fan, and dehumidifier)
- Features Control panel with LED display on unit with remote control
  - Equipped with casters
    - 24 hour timer
  - Window kit included
    - Portable
  - Voltage: 115 V
  - Frequency: 60 Hz
  - Overall Dimensions: 17-1/3" W x 12-4/5" D x 27-1/3" H



Model No.	Coverage sq.ft.	BTU Rating	Cooling Speed	Promo Price
EA830	450 - 550	12000	3	644.00

## MOBILE 3-IN-1 AIR CONDITIONER

- 3-in-1 system (A/C, fan, and dehumidifier)
- Features Control panel with LED display on unit with remote control
- Equipped with casters
- 24 hour timer
- Window kit included
- Portable
- Voltage: 115 V
- Frequency: 60 Hz
- Overall Dimensions: 11-13/16" W x 12-5/8" D x 27-3/16" H



Model No.	Coverage sq.ft.	BTU Rating	Cooling Speed	Promo Price
EB118	300 - 350	8000	2	499.00

## ELECTRONIC WINDOW HORIZONTAL AIR CONDITIONER

- 3 fan speeds
- Washable filter
- Remote control included
- Includes: Window filler panel, mounting hardware
- Fits a 14" x 23-36" window opening
- Amps: 15 A
- Voltage: 115 V
- Energy Star Certification: EER 12.0
- Overall Dim. 18-1/2" W x 15-11/16" D x 13-3/8" H



Model No.	Coverage sq.ft.	BTU Rating	Promo Price
EB119	300 - 350	8000	418.00

## OSCILLATING TOWER FAN

- Wide-angle oscillation
- Stable base
- Type: Pedestal
- No. of Speeds: 3
- Colour: Black
- Voltage: 120 V
- Power: 40 W
- Frequency: 60 Hz
- Overall Height: 32"



Model No.	Dia."	Promo Price
EA827	6	59.75



## PORTABLE SHOP VACUUM

- Lightweight and portable
- Great for quick wet or dry pick up jobs in your home, garage, workshop or vehicle
- Attach the hose to the rear blower port to blow dirt out from those hard to reach places
- Wall-mountable design
- **Includes:** Wet/dry vacuum, 4' Hose, Crevice tool, Gulper nozzle, Wall-mounting bracket, Onboard tool storage, Reusable dry filter with ring (Type S), Foam sleeve (Type R), 2-2.5 Gallon disposable filter bag (Type B)
- Material: Polycarbonate
- Tank Capacity: 2.5 US Gal. (9.5 Litres)
- Peak HP: 2.5 HP
- Air Flow: 60 CFM
- Sealed Pressure: 53"
- Peak Air Watts: 120
- Electrical Rating: 120 V/60 Hz/8 Amps
- Cord Length: 10'
- Hose Diameter: 1.25"
- Hose Length: 4'
- Manufacturer's Warranty: 3 Years



Model No.	Promo Price
EB333	115.00

## DRUM-TOP VACUUM HEAD

- For use with 55 gallon drums
- **Includes:** Vacuum head, 12' Crush-resistant hose, Claw utility nozzle, Right angle connector Ultra-Web® cartridge filter
- Type: Wet-Dry • Peak HP: 3 HP
- Motor Stage: 2-Stage • Air Flow: 80 CFM
- Sealed Pressure: 95"
- Electrical Rating: 120 V/60 Hz/11 Amps
- Cord Length: 35'
- Hose Diameter: 1.5"
- Hose Length: 12'
- Air Watts: 230 W



Model No.	Promo Price
EB343	1015.00

## GRAFFITI REMOVER GEL

- Easy-to-use with a superior blend of solvents
  - Works on oil based marks
- Removes crayon, lipstick and spray paint
  - Gel clings to vertical surfaces
    - Container Size: 20 oz.
- Container Type: Aerosol Can



Sprayway

Model No.	Promo Price
JP339	8.95

## SHOP VACUUM

- Able to handle any type of mess your benchtop machines, power tools and team can put out
- Convenient rear tool accessory pack to ensure the tools you need are always right where you are
- Features a cartridge filter and dry collection filter bag for dry pickup, along with a foam filter sleeve for wet or combination pickup
  - Heavy-duty roller wheels for easier transport
- **Includes:** (1) Vacuum, (1) 7' Locking hose, (1) 10" Floor nozzle, (3) Extension wands, (1) Gulper tool, (1) Crevice tool, (1) Cartridge filter, (1) Dry collection filter bag, (1) Foam filter sleeve

shop-vac.



- Type: Wet-Dry
- Material: Stainless Steel
- Tank Capacity: 8 US Gal. (30.28 Litres)
  - Peak HP: 6 HP
- Hose Diameter: 1.25"
  - Hose Length: 7'
  - Cord Length: 6'

Model No.	Promo Price
EB352	209.00

## CRAZY CLEAN® ALL PURPOSE CLEANER

- Multi-purpose cleaner for auto detailers, glass/mirror handlers, industrial maintenance, housekeeping personnel, or sign/display tradesmen
- Clinging foam cleans and deodorizes
- Removes hand prints, scuff and crayon marks, grease spots, soot stains, and smoke film
- Produces sparkling results when used on hard surfaces, on window sills, or venetian blinds
- Container Size: 20 oz.
- Container Type: Aerosol Can
- Net Weight: 19 oz.
- Colour: White
- Fragrance: Floral
- Spray Style: Solid Cone

Sprayway



Model No.	Promo Price
JL412	7.30

## STAINLESS STEEL POLISH & CLEANER

- Specially formulated for use on stainless steel fixtures, equipment, or trim
  - Cleans, polishes, and protects stainless steel without scouring
- Resists fingerprints, grease, and water spatter
- Removes old or heavy accumulation of greasy film, food spatter, or oil stains
  - Container Size: 20 oz.
- Container Type: Aerosol Can
  - Net Weight: 15 oz.
  - Colour: Clear
  - Fragrance: Lemon
- Spray Style: Mist Spray



Sprayway

Model No.	Promo Price
JL410	8.20



## TOWABLE PALLET CART

- Easily tow up to 3 carts at once with a towing vehicle using the heavy-duty tow bar and hitch
- Compatible with all standard wooden and plastic pallets up to a standard 48" x 48" pallet
- Features a precision-engineered Duramold™ Deck constructed of resin and metal composite that is lighter than typical steel/wood products without sacrificing strength
- Patented handle designed with variable grip heights to suit a wide range of user heights when used manually with up to two products
- Wheel Diameter: 8"
- Wheel Type: Polyolefin
- Deck Height: 12-3/8"
- Frame Material: Powder-Coated Steel
- Colour: Black



Model No.	Deck Width"	Deck Length"	Handle Height"	Capacity lbs.	Promo Price
<b>MP735</b>	51	54-1/2	42.5	2500	<b>1979.00</b>

## TOWABLE PLATFORM CART

- Easily tow up to 3 carts at once with a towing vehicle using the heavy-duty tow bar and hitch
- Features a precision-engineered Duramold™ Deck constructed of resin and metal composite that is lighter than typical steel/wood products without sacrificing strength
- Patented handle with variable grip height
- Deck Dim.: 30-1/2" W x 64-1/4" L x 12-3/8" H
- Handle Height: 42.5"
- Capacity: 2500 lbs.
- Wheel Diameter: 8"
- Wheel Type: Polyolefin



Model No.	Promo Price
<b>MP736</b>	<b>1697.00</b>

## FLAT SHELF HEAVY DUTY UTILITY CART

- Sturdy structural foam construction won't rust, dent, chip or peel
- High density structural resin construction
- Ergonomic handle design improves control and worker safety
- Rounded corners protect walls and furniture
- No. of Shelves: 2
- Capacity: 500 lbs. evenly distributed
- Cart Material: Structural Foam
- Wheel Material: Rubber



Model No.	Overall Dimensions			Promo Price
	W"	x	D" x H"	
<b>ML458</b>	25-7/8	x	43-9/10 x 33-3/10	<b>404.00</b>

## LIGHT-DUTY UTILITY CART

- Durable plastic construction
- Flat shelves with retaining beaded edges
- No. of Shelves: 3
- 4" swivel non-marking casters
- 19" W x 34" D x 38" H
- Capacity: 200 lbs. evenly distributed



Model No.	Colour	Promo Price
<b>MH223</b>	Platinum	<b>321.00</b>

## TILT TRUCKS

- Sturdy, rotationally-moulded plastic construction ensures easy manoeuvrability and dumping
- Smooth surface is easy to clean and resists pitting and corroding
- Inset wheel and axle design helps prevent damage to surfaces and equipment
- Accepted for use in Canadian food processing facilities
- Bin Material: Polyethylene
- Colour: Black



Model No.	Capacity cu. yd.	lbs.	Overall Dim. L" x W" x H"	Promo Price
<b>MK788</b>	1/2	450	56.75 x 28 x 38.5	<b>897.00</b>
<b>MK789</b>	1	850	72.25 x 33.5 x 43.75	<b>1232.00</b>

ML448

## HEAVY-DUTY UTILITY CARTS

- Constructed from sturdy structural foam that will not rust, dent, chip nor splinter
  - 2-3/4" deep top shelf
- Ergonomic handle improves control and worker safety
- 5" non-marking TPR casters, two rigid, two swivel
  - Capacity: 500 lbs. evenly distributed



Model No.	Overall Dimensions			Promo Price
	W"	x	D" x H"	
<b>ML448</b>	17-1/8	x	39 x 33-1/4	<b>284.00</b>
<b>ML450</b>	25-1/4	x	44 x 39	<b>355.00</b>

## GAS CYLINDER CARTS

- Choice of carts for a wide range of cylinder sizes and terrains
- Wheel Type: 10" Dia. semi-pneumatic
- Cart Material: Steel

### ML414

- Capacity: 300 cu.ft. 9" Dia., cylinder
- Capacity: 400 lbs.

### ML417

- Capacity: 144 cu.ft. or 244 cu.ft. oxygen, 130 cu.ft. acetylene cylinders
- Capacity: 1000 lbs.



KLETON

Model No.	Base W" x D"	No. of Cylinders	Promo Price
<b>ML414</b>	12 x 10	1	<b>210.00</b>
<b>ML417</b>	19 x 10	2	<b>246.00</b>

## HEAVY-DUTY SHELF CARTS

- All-welded ready to use
- Versatile for all material transport
- Cart constructed from 14-gauge steel shelves welded to 1 1/2" x 1 1/2" x 1/8" steel angle posts
- 1" diameter tubular steel handle
- Capacity: 1200 lbs. evenly distributed
- Durable Kleton blue enamel finish
- Clearance Between Shelves: 27"
- Shelf Dimensions: 24" W x 36" L
- Wheel Material: Blue Elastic Rubber
- Handle Height: 36"



KLETON

Model No.	No. of Shelves	Overall Dim. W" x D" x H"	Lip Configuration	Promo Price
<b>MB447</b>	2	24 x 36 x 36	Lip Up	<b>347.00</b>
<b>MB446</b>	2	24 x 36 x 36	Lip Down	<b>347.00</b>
<b>MB459*</b>	3	24 x 39 x 36	Lip Up	<b>394.00</b>
<b>MB458*</b>	3	24 x 39 x 36	Lip Down	<b>394.00</b>

\*Clearance Between Shelves: 12"

## HEAVY-DUTY WOOD DOLLIES

- 1 3/4" wood top (2 x 7/8" pieces); countersunk bolts
- 4" resilient Non-marking casters
- Capacity: 1400 lbs.
- Wheel Material: Rubber
- Platform Type: Standard



MA188

KLETON

Model No.	W"	Dimensions x D" x H"	Promo Price
<b>MA188</b>	18	x 24 x 7	<b>134.00</b>
<b>MD517</b>	18	x 30 x 7	<b>164.00</b>

## INSTITUTIONAL PLATFORM TRUCK

- Ideal truck for institutional applications - hospitals, restaurants, shopping centres, offices, industry and anywhere else a quiet ride and professional appearance is required
- 14-gauge steel deck with 2" lip underneath
- Non-skid rubber surface means product will not shift during use
- Rubber corner bumpers protect walls and furniture
- Capacity: 1000 lbs.
- Caster Placement: Corner Standard
- Caster Type: Non-Marking Rubber
- Caster Size: 5"



KLETON

Model No.	Deck Width"	Deck Length"	Promo Price
<b>MB209</b>	30	60	<b>784.00</b>

## PLATFORM TRUCKS

- All-welded design 14-gauge steel base
- Two turned down lip and reinforced channels underneath
- Double welded sockets
- Removable 1 1/4" chrome handle can be placed at either end
- Capacity: 1400 lbs. evenly distributed
- Caster Placement: Corner Standard
- Wheel Diameter: 8"
- Wheel Material: Rubber
- Deck Height: 11"



KLETON

MB236

Model No.	Deck Width"	Deck Length"	Handle Height"	Promo Price
<b>MB236</b>	24	36	39	<b>324.00</b>
<b>MB244</b>	24	48	39	<b>360.00</b>
<b>MD425</b>	30	48	39	<b>385.00</b>
<b>MB252</b>	30	60	39	<b>455.00</b>

## KNOCKED DOWN HAND TRUCKS

- Strong, lightweight hand truck provides exceptional durability and versatility
- Weld-free construction for easy maintenance
- Frame Material: Aluminum
- Nose Plate Dimensions: 18" W x 7-1/2" D
- Wheel Material: Mold on Rubber
- Wheel Size: 8" H x 2" W
- Capacity: 500 lbs.

MO891



KLETON

Model No.	Handle Type	Overall Height"	Overall Width"	Promo Price
<b>MO891</b>	Dual	52	20	<b>224.00</b>
<b>MO073</b>	P-Handle	52	14	<b>224.00</b>
<b>MN027</b>	P-Handle	48	21	<b>232.00</b>
<b>MN024</b>	Continuous	48	16	<b>208.00</b>
<b>MO892</b>	Continuous	48	20	<b>216.00</b>

## BLUE CASTERS

- High load capacity, rolls easily and quietly on all floors
- Non-marking, excellent floor protection
- Zinc chrome plated finish provides corrosion resistance
- Elastic rubber tread rejects floor debris
- Wheel Material: Rubber
- Caster Type: Rigid
- Frame Material: Steel
- Bolt Hole Spacing: 2-3/8" x 3-1/8"
- Bolt Hole Size: 3/8"
- Plate Size: 3-3/8" x 4"



ML342

**KLETON**

Model No.	Wheel Dia."	Cap. lbs.	Style	Tread Width"	Overall Height"	Promo Price
<b>MO512*</b>	3	285	Rigid	1-1/4	4-1/4	<b>9.80</b>
<b>MO511*</b>	3	285	Swivel	1-1/4	4-1/4	<b>11.20</b>
<b>MO513*</b>	3	285	Swivel with Brake	1-1/4	4-1/4	<b>14.40</b>
<b>ML334</b>	4	350	Rigid	1-3/8	5	<b>14.00</b>
<b>ML333</b>	4	350	Swivel	1-3/8	5	<b>15.60</b>
<b>ML342</b>	4	350	Swivel with Brake	1-3/8	5	<b>19.20</b>
<b>ML338</b>	5	400	Rigid	1-3/8	6	<b>19.20</b>
<b>ML337</b>	5	400	Swivel	1-3/8	6	<b>20.90</b>
<b>ML345</b>	5	400	Swivel with Brake	1-3/8	6	<b>26.10</b>

\* Roller Bearing

## HI-TEMP CASTERS

- Smooth rolling, low noise operation
- Non-marking
- Zinc chrome-plated finish provides corrosion resistance
- Superior resistance to most oils, chemicals and grease
- Wheel Material: Nylon
- Frame Material: Steel
- Tread Width: 1-3/4"
- Bolt Hole Spacing: 3" x 3-1/3"
- Bolt Hole Size: 7/16"
- Plate Size: 4" x 4-1/2"
- Max Temperature: 230°C



ML863

**KLETON**

Model No.	Wheel Dia."	Cap. lbs.	Style	Overall Height"	Promo Price
<b>ML862</b>	6	880	Rigid	7 5/8	<b>34.10</b>
<b>ML861</b>	6	880	Swivel	7 5/8	<b>41.20</b>
<b>ML863</b>	6	880	Swivel with Brake	7 5/8	<b>44.30</b>
<b>ML865</b>	8	1000	Rigid	9 1/2	<b>45.40</b>
<b>ML864</b>	8	1000	Swivel	9 1/2	<b>53.90</b>
<b>ML866</b>	8	1000	Swivel with Brake	9 1/2	<b>56.20</b>

## POLYOLEFIN CASTERS

- Rolls easily and quietly on all floors
- Lightweight and economical
- Non-marking, easy to maintain, steam cleanable
- High impact strength
- Capacity: 250 lbs.
- Frame Material: Steel
- Tread Width: 1-1/4"
- Bolt Hole Spacing: 1-3/4" x 2-3/4"
- Bolt Hole Size: 5/16"
- Plate Size: 2-5/8" x 3-3/4"



MP578

**KLETON**

Model No.	Wheel Dia."	Style	Overall Height"	Promo Price
<b>ML392</b>	3	Rigid	4-1/2	<b>5.80</b>
<b>ML391</b>	3	Swivel	4-1/2	<b>7.70</b>
<b>MP578</b>	3	Swivel with Brake	4-1/2	<b>10.00</b>
<b>ML394</b>	4	Rigid	5-1/4	<b>7.50</b>
<b>ML393</b>	4	Swivel	5-1/4	<b>8.60</b>
<b>MP579</b>	4	Swivel with Brake	5-1/4	<b>10.90</b>
<b>ML396</b>	5	Rigid	6-1/8	<b>8.80</b>
<b>ML395</b>	5	Swivel	6-1/8	<b>10.40</b>
<b>MP580</b>	5	Swivel with Brake	6-1/8	<b>11.70</b>

## MOLD-ON CASTERS

- Molded rubber wheel permanently bonded to spoked cast iron core
- Iron centre gives it strength while the molded rubber offers smooth and quiet operation
- Protects loads and surfaces
- Won't damage warehouse or factory floors
- Wheel Material: Rubber
- Frame Material: Steel
- Tread Width: 2"
- Bolt Hole Spacing: 2-7/8" x 3-1/3"
- Bolt Hole Size: 7/16"
- Plate Size: 4" x 4-1/2"



ML851



ML853

**KLETON**

Model No.	Wheel Dia."	Cap. lbs.	Style	Promo Price
<b>ML847</b>	5	440	Rigid	<b>18.00</b>
<b>ML846</b>	5	440	Swivel	<b>22.40</b>
<b>ML850</b>	6	550	Rigid	<b>20.00</b>
<b>ML849</b>	6	550	Swivel	<b>24.00</b>
<b>ML851</b>	6	550	Swivel with Brake	<b>27.90</b>
<b>MN451</b>	6	550	Butterfly Side	<b>27.30</b>
<b>ML853</b>	8	660	Rigid	<b>28.70</b>
<b>ML852</b>	8	660	Swivel	<b>34.70</b>
<b>ML854</b>	8	660	Swivel with Brake	<b>36.60</b>



## DOCK LIGHT

- Built-in on-off switch
- Durable stainless steel cage for better protection of the light
- Bracket mounted for easy installation
- Arm sections are adjustable in all directions
- Extended Arm Length: 40"
- Lamp Type: LED
- Wattage: 50W
- Head Type: Metal
- Lumens: 5500

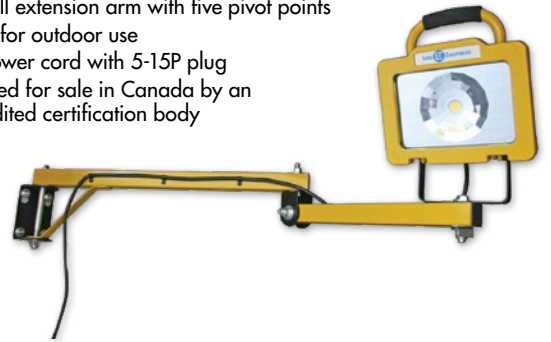


**AURORA**  
TOOLS

Model No.	Promo Price
<b>XI316</b>	<b>229.00</b>

## HEAVY-DUTY DOCK LIGHT

- LED array rated for 50 000 hours
- 40" full extension arm with five pivot points
- Rated for outdoor use
- 10' power cord with 5-15P plug
- Certified for sale in Canada by an accredited certification body



Model No.	Promo Price
<b>XD022</b>	<b>269.00</b>

LIND **E** EQUIPMENT

## WHEEL CHOCKS

- Highly resistant to abrasion, impacts, corrosion, sun, salt, ozone and oil
- Colour: Black
- Max. Tire Diameter: 35"

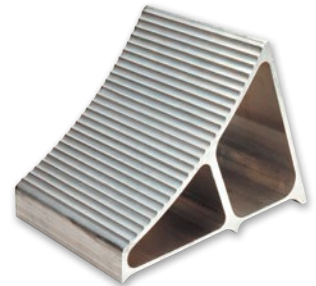


**KLETON**

Model No.	Description	Dimensions W" x D" x H"	Promo Price
<b>KH032</b>	Steel Ring on Back	6-1/2 x 9-1/2 x 7-1/2	<b>25.50</b>
<b>KH600</b>	Handle on Side	8 x 9 x 6	<b>21.20</b>

## ALUMINUM WHEEL CHOCK

- High in strength but lightweight. Resists the effects of oil, salt, corrosion and weather. Non-sparking.
- Max. Tire Diameter: 35"
- Width: 7"
- Depth: 11-1/2"
- Height: 8"



**IDEAL WAREHOUSE**  
INNOVATIONS INC

Model No.	Promo Price
<b>KH022</b>	<b>58.30</b>

## MOLDED DOCK BUMPERS

- Protects building and dock areas
- Shockproof, tear and freeze resistant
- Material: Rubber

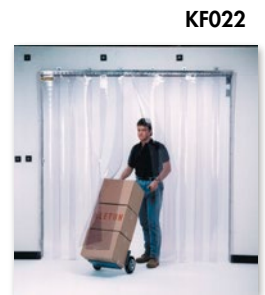


**KLETON**

Model No.	Overall Dimensions					Promo Price
	W"	x	D"	x	H"	
<b>KH005</b>	13	x	4	x	10	<b>42.70</b>
<b>KH009</b>	18	x	4	x	10	<b>63.90</b>

## STRIP CURTAIN DOORS

- Optimal solution for open-door heat/cooling loss
- Provides ideal acoustical barrier from noisy equipment
- Transparent material allows for improved vision and reduced chance of accidents
- Includes all strips, universal mounting header, hardware to attach strips and installation instructions
- Does not include hardware for wall mounting bracket
- Strip Thickness: 0.080"
- PVC Material Type: Standard



**KLETON**

Model No.	Door Width'	Door Height'	Strip Width"	Promo Price
<b>KF022</b>	4	7	8	<b>155.00</b>
<b>KF023</b>	5	8	8	<b>196.00</b>
<b>KF024</b>	6	8	8	<b>220.00</b>

## CHAIN HOISTS

- Lightweight steel construction
- Triple spur geared for easy lifting
- Load brake assures safety and load control
- High tensile alloy steel load chain for increased strength and durability
- Meets ASME B30.16
- Chain Material: Alloy Steel

KLETON



Model No.	Capacity	Lift'	Promo Price
LW567	1000 lbs. (0.45 tons)	10	125.00
LW568	2000 lbs. (1 tons)	10	139.00
LW569	3000 lbs. (1.5 tons)	10	179.00
LW570	4000 lbs. (2 tons)	10	199.00
LW573	1000 lbs. (0.45 tons)	20	169.00
LW574	2000 lbs. (1 tons)	20	179.00
LW575	3000 lbs. (1.5 tons)	20	247.00
LW576	4000 lbs. (2 tons)	20	262.00
LW577	6000 lbs. (3 tons)	20	372.00

## ADJUSTABLE TROLLEYS WITH SAFETY PLATES

LW552

- Easily adjusts to fit various flanges, I-beams and H-beams
- Use on straight or curved track
- Can be installed or removed at any position on the beam
- Heavy-duty cast iron wheels
- Meets ASME B30.16

LW559



KLETON

Model No.	Capacity	I-Beam Flange Width"	Promo Price
LW552	1000 lbs. (0.45 tons)	2-11/16 - 5-3/8	101.00
LW553	2000 lbs. (1 tons)	3-1/8 - 6-1/4	116.00
LW554	4000 lbs. (2 tons)	3-1/8 - 6-1/4	199.00
LW555	6000 lbs. (3 tons)	3-7/16 - 7-3/8	281.00
LW556	10000 lbs. (5 tons)	4-13/16 - 9-9/16	455.00
LW559*	4000 lbs. (2 tons)	3-1/8 - 7-1/16	244.00
LW560*	6000 lbs. (3 tons)	3-7/16 - 7-3/8	314.00

\*Geared trolleys include two geared wheels operated by hand chain

## LEVER HOISTS

- Lightweight steel construction
- Short steel handle rotates 360° to allow operation in any position
- Load brake assures safety and load control
- High tensile alloy steel load chain for increased strength and durability
- Meets ASME B30.16
- Lift: 5'
- Chain Material: Alloy Steel

KLETON



Model No.	Capacity	Promo Price
LW562	1500 lbs. (0.75 tons)	202.00
LW563	2000 lbs. (1 tons)	244.00
LW564	3000 lbs. (1.5 tons)	262.00
LW565	6000 lbs. (3 tons)	428.00
LW566	12000 lbs. (12 tons)	636.00

## HYDRAULIC PLATFORM LIFT STACKER

- Allows workers to manoeuvre and lift heavy loads safely to comfortable needed height
- Foot pedal folds safely out of the way
- Front 3" polyurethane wheels and rear 5" polyurethane casters
- Lifting Capacity: 880 lbs.
- Platform Dimensions: 23" W x 25-3/4" D
- Lowered Platform Height: 4"
- Raised Platform Height: 60"
- Operation Type: Foot Pump
- Overall Dimensions: 23" W x 39" D x 67-3/4" H



Model No.	Promo Price
MN397	1379.00

KLETON

## SCISSOR LIFT TABLES

- Heavy-duty construction with captured scissor rollers for maximum stability
- Superior hydraulic systems feature an integrated pump-cylinder for maximum reliability
- Ergonomic push handle with convenient lowering control
- Quality powder-coated finish provides exceptional durability and corrosion resistance
- Includes collapsible handle
- Platform height dimensions include the wheels

MJ518



MJ522



KLETON

Model No.	Platform Height		Platform Dim.		Handle Height"	Load Cap. lbs.	Promo Price
	Lowered"	Raised"	Width"	Length"			
MJ518	8-5/8	29	17-3/4	27-1/2	37-3/8	330	603.00
MJ519	11-1/4	34-5/8	19-3/4	32	39	660	800.00
MJ520	14	51-1/4	19-3/4	35-3/4	39	770	1025.00
MJ521	11-1/4	34-5/8	19-3/4	32	39	1100	861.00
MJ522	11-1/4	36	31-7/8	63	39	1100	1472.00
MJ523	14-1/2	35-3/8	20-1/8	39-3/8	40	1650	1062.00
MJ524	15	39	20-1/8	40	39	2200	1144.00
MJ525	15	53-1/2	29-1/2	80-1/8	40	2200	2255.00
MJ526	17-1/2	59-1/8	24	48	40	1545	1800.00

## ATB100 PORTABLE TOOL BOXES WITH METAL TOOL TRAY

- Durable steel construction
- Heavy-plated latches
- Inner trays in regular hand boxes
- High gloss powder coat paint finish
- Colour: Red
- Unit Capacity: 50 lbs.



TEP516

**AURORA**  
TOOLS

Model No.	Overall Dimensions				Promo Price
	W"	x	D"	x H"	
TEP516	16	x	6	x 6-1/2	<b>56.20</b>
TEP336	21	x	8-3/4	x 9	<b>95.20</b>

## INDUSTRIAL TOOL CART

- Double-walled steel construction for added strength
- Full extension ball bearings slides on all drawers
- Double drawer glides on the top drawer
- Extruded aluminum drawer handle trim
- No. of Drawers: 12
- Overall Dimensions: 56" W x 24-1/2" D x 38-1/8" H
- Unit Capacity: 1200 lbs.
- Drawer Capacity: 100 lbs.



**AURORA**  
TOOLS

Model No.	Promo Price
TER103	<b>2040.00</b>

## UTILITY CART

- Heavy-duty steel construction
- Full extension ball bearings slides on all drawers
- High quality 4" swivel casters
- No. of Drawers: 4
- Overall Dimensions: 33" W x 18" D x 39" H
- Drawer Capacity: 100 lbs.
- Unit Capacity: 550 lbs.



**AURORA**  
TOOLS

Model No.	Promo Price
TEP483	<b>524.00</b>

## INDUSTRIAL TOOL CARTS

- Double wall steel construction for added strength
- Full extension ball bearings slides on all drawers
- Extruded aluminum drawer handle trim
- Non-slip drawer liners
- Drawer Capacity: 100 lbs.
- Caster Dimensions: 5" x 2" (127 mm x 51 mm)

**AURORA**  
TOOLS

TER217



TER067



Model No.	No. of Drawers	Overall Dim. W" x D" x H"	Unit Cap. lbs.	Promo Price
TER217	6	39 x 20-4/5 x 25-4/5	1140	<b>812.00</b>
TER065	7	27 x 18-3/4 x 39	1400	<b>644.00</b>
TER067	11	41 x 18-3/4 x 39-1/3	1400	<b>1060.00</b>

## HEAVY-DUTY TOOL CART

- Heavy-duty double wall steel construction for added strength
- Quadra level ball bearing slides on all drawers
- Drawers feature soft close technology
- Heavy-duty reinforced bottom support rails for heavier loads
- Power and USB outlets on the side of the cabinet makes it quick and easy to charge your power tools and mobile devices
- No. of Drawers: 7
- Overall Dim.: 28" W x 22" D x 42-3/8" H
- Drawer Capacity: 120 lbs.
- Unit Capacity: 1400 lbs.

**AURORA**  
TOOLS



Model No.	Promo Price
TER069	<b>1102.00</b>

## INDUSTRIAL TOOL CHESTS

- Double wall steel construction for added strength
- Full extension ball bearings slides on all drawers
- Extruded aluminum drawer handle trim
- Powder coat scratch resistant black paint
- TER066 Drawer Capacity: 75 lbs.
- TER068 Drawer Capacity: 100 lbs.

**AURORA**  
TOOLS

TER066



Model No.	No. of Drawers	Overall Dim. W" x D" x H"	Unit Cap. lbs.	Promo Price
TER066	4	26 x 12 x 14-1/4	375	<b>360.00</b>
TER068	10	41 x 17-3/4 x 19	1000	<b>714.00</b>



## PARTS CABINETS

- Housed in all-welded galvanised steel cabinet
- I.D. card with clear plastic shield and divider included with every drawer
- New design allows 98% use of drawer space to store larger tools or materials
- Grey enamel finish

KLETON

CF283



### KPC-100 PARTS CABINET

- Heavy-duty ABS grey drawers
- Drawer size: 6.4" W x 11.3" D x 2.7" H

Model No.	Dimensions W" x D" x H"	No. of Drawers	Promo Price
CF283	23 x 11-2/5 x 13-4/5	12	369.00
CF285	23 x 11-2/5 x 36-9/10	36	519.00

### KPC-200 PARTS CABINET

- Heavy-duty ABS grey drawers
- Drawer size: 5.9" W x 9.8" D x 3.3" H



Model No.	Dimensions W" x D" x H"	No. of Drawers	Promo Price
CA889	21-3/10 x 10-2/5 x 36-9/10	30	494.00

### KPC-300 PARTS CABINET

- Clear polystyrene drawers
- Drawer size: 5.9" W x 9.8" D x 1.6" H
- Dim. 21-3/10" W x 10-2/5" D x 36-9/10" H
- No. of Drawers: 60



Model No.	Promo Price
CA890	676.00

### KPC-400 PARTS CABINET

- Heavy-duty ABS beige drawers
- Drawer size: 4.7" W x 8.6" D x 2.7" H

CF298



Model No.	Dimensions W" x D" x H"	No. of Drawers	Promo Price
CF298	23-1/10 x 8-7/10 x 13-4/5	16	261.00
CA891	17-3/10 x 8-7/10 x 25-3/5	24	311.00
CD440*	22-3/5 x 10-4/5 x 36-9/10	48	743.00

\*Comes with locking door

### KPC-500 PARTS CABINET

- Clear polystyrene drawers
- Drawer size: 3.5" W x 8.6" D x 2.7" H

CC453



Model No.	Dimensions W" x D" x H"	No. of Drawers	Promo Price
CF304	14 x 8-2/3 x 16-1/3	15	215.00
CF305	18-3/10 x 8-7/10 x 13-4/5	16	256.00
CC453	18-1/10 x 8-7/10 x 25-3/5	32	353.00
CC454	22-3/5 x 8-7/10 x 36-9/10	60	602.00

## GEAR LOCKERS

- Lower shelf saves space as it also functions as a locker room bench
- Ventilated sides for optimal air flow
- Lockable safety box and foot locker for secure storage
- Coat rod and hooks provide ample room for hanging uniforms, bags, and other gear, while the upper and lower shelves provide plenty of flat storage area
- Overall Height: 72"
- Overall Width: 24"
- Colour: Grey
- Material: Steel

FN466

FN468



KLETON



Model No.	Description	Overall Depth"	Promo Price
FN467	W/Door	18	582.00
FN466	W/Door	24	636.00
FN469	W/O Door	18	463.00
FN468	W/O Door	24	514.00

## LOCKERS

- 16-gauge frames, 24-gauge body and shelves
- Double pan construction doors, 20-gauge outer and 24-gauge inner pans
- Stainless steel recessed padlock handles
- Magnetic latch ensures door is properly fastened when closed
- Features three zinc-plated coat hooks and one shelf
- Non-perforated
- Colour: Grey
- Material: Steel
- Top Style: Basic
- Base Style: Unfinished
- Assembly Type: Rivet (Assembled)

FN465



FN460

KLETON

Model No.	No. of Tiers	Bank of	Overall Dim. W" x D" x H"	Promo Price
FN460	1	1	12 x 18 x 72	276.00
FN461	1	2	24 x 18 x 72	436.00
FN462	1	3	36 x 18 x 72	644.00
FN463	2	1	12 x 18 x 72	292.00
FN464	2	2	24 x 18 x 72	492.00
FN465	2	3	36 x 18 x 72	724.00

## INDUSTRIAL ENAMEL PAINT

- Offers an economical solution to marking, colour coding and miscellaneous spray paint needs where long term quality and durability are not required
- Dries to touch in 12 minutes
- VT alkyd formulation
- Application: For use on ceramic, plaster, glass, metal, wood and most other surfaces
- Container Size: 16 oz. • Net Volume: 10 oz.
- Paint Base Type: Solvent-Based

NI478



Model No.	Colour Family	Finish	Promo Price
<b>PAINT</b>			
NI478	Black	Gloss	7.56
NI492	Black	Very Flat	7.56
NI475	Red	Gloss	7.56
NI474	Orange	Gloss	7.56
NI472	White	Gloss	7.56
<b>PRIMER</b>			
NI479	Grey	Very Flat	7.56

## 2300 SYSTEM TRAFFIC ZONE STRIPING PAINT

- Apply this weather-resistant coating to concrete, gravel or pavement for durability you can count on
- Creates up to 450 linear feet/ gallon with a 4" stripe
- Use with bulk-spray machine, brush or roller
- For use on: Parking lots, stadiums, curbs, athletic facilities
- Container Size: 1 gal.
- Surface Coverage: 410-540 linear feet
- Series: High Performance 2300

KP405



**RUST-OLEUM**

Model No.	Colour Family	Finish	Promo Price
KP405	Yellow	Flat	61.80
KP406	White	Flat	61.80
KP733	Blue	Flat	61.80

## INDUSTRIAL OVERHEAD MARKING PAINT

- Overhead marking paint sprays in an upright position, dries fast and is a low odour formula
- Penetrates and clings to uneven surface
- Comes in bright, high visibility fluorescent colours
- Fast drying; dry to the touch in 10 minutes
- VOC & MIR compliant
- Container Size: 20 oz. • Net Volume: 17 oz.
- Paint Base Type: Water-Based
- **Must be ordered in multiples of 2**

KP091



Model No.	Colour	Swatch	Promo Price
KP091	Red		13.60
KP092	Orange		13.60
KP093	Green		13.60

Note: Colours may not be exactly as shown

## WATER BASED MARKING PAINT

- Best resistance to early fading and chalking
- Excellent visibility on concrete, pavement, dirt, gravel, grass and more
- Container Size: 20 oz. • Net Volume: 17 oz.
- Finish: Flat
- Surface Coverage: 400 Linear ft at 1 Inch
- Series: Industrial Choice M1400
- **Must be ordered in multiples of 3**

KP459



**RUST-OLEUM**

Model No.	Colour	Swatch	Promo Price
KP459	Clear		6.74
KP452	White		6.74
KP453	Red		6.74
KP455	Blue		6.74
KP456	High Visibility Yellow		6.74
KP457	Fluorescent Red-Orange		6.74
KP458	Fluorescent Green		6.74
KP454	Fluorescent Pink		6.74
KP460	Fluorescent Orange		6.74

Note: Colours may not be exactly as shown

## INDUSTRIAL QUICK-MARK™ INVERTED MARKING PAINT

- Bold, bright and visible markings in one pass
- Adheres to gravel, concrete, grass and soil
- Advanced UV-resistant, fast drying formula that will not fade in extreme sun and will penetrate and adhere to hot, cold or wet surfaces
- VOC compliant
- Container Size: 20 oz. • Net Volume: 17 oz.
- **Must be ordered in multiples of 3**

NC325



**KRYLON INDUSTRIAL**

Model No.	Colour	Swatch	Promo Price
<b>WATER-BASED APWA COLOURS</b>			
NC332	Utility Yellow		6.59
NC331	Brilliant White		6.59

<b>WATER-BASED FLUORESCENT COLOURS</b>			
NC334	Safety Red		6.59
NC335	Pink		6.59
NC336	Caution Blue		6.59
NC337	Safety Green		6.59
NC338	Red/Orange		6.59
NC333	Orange		6.59

<b>SOLVENT-BASED APWA COLOURS</b>			
NC328	Red		7.41
NC326	Blue		7.41
NC329	Green		7.41
NC327	Bright Orange		7.41
NC325	High Visibility Yellow		7.41
NC324	Utility White		7.41

<b>SOLVENT-BASED FLUORESCENT COLOURS</b>			
NC322	Safety Red		7.41
NC323	Neon Green		7.41
NE260	Purple		7.41
NE262	Hot Pink		7.41
NC320	Red/Orange		7.41
NC321	Orange		7.41

Note: Colours may not be exactly as shown

**AURORA**  
TOOLS

## FIBREGLASS HANDLE SHOVELS

- Durable fibreglass handle with rubber grip
- Forward turned step for extra strength
- Blade Material: Tempered Steel



Model No.	Blade Size"	Handle Type	Handle Length"	Overall Length"	Promo Price
-----------	-------------	-------------	----------------	-----------------	-------------

### ROUND POINT

<b>NJ093</b>	11 x 8-1/2	D-Grip	32-1/2	42	<b>22.10</b>
<b>TLZ465</b>	11 x 8-1/2	Straight	36-1/2	56	<b>23.10</b>

### SQUARE POINT

<b>NJ094</b>	11-1/2 x 8-1/2	D-Grip	32-1/2	42	<b>21.45</b>
<b>NJ095</b>	11-1/2 x 8-1/2	Straight	48	56	<b>22.25</b>

### DRAIN SPADE

<b>NJ096</b>	16 x 6	D-Grip	28-1/2	42-1/2	<b>19.00</b>
--------------	--------	--------	--------	--------	--------------

## GRAIN & COAL SCOOP SHOVEL

- Top-of-the-line industrial grade tools designed for intense and continuous use
- Blade Size: 17-3/8" x 12"
- Blade Material: Tempered Steel
- Handle Material: Wood
- Handle Type: D-Grip
- Handle Length: 27-3/4"



**Garant**

Model No.	Promo Price
<b>ND122</b>	<b>64.50</b>

## WALL-MOUNT HOSE REEL

- Built-in winding handle, hose guide for easy winding
- 4-ft leader hose included
- Hose Capacity: 100'
- Material: Poly-Plastic
- Dimensions: 8" x 19-1/2" x 18"

**Garant**

Model No.	Promo Price
<b>NO388</b>	<b>56.50</b>



## PISTOL GRIP NOZZLES

- Continuous-spray stainless steel clip
- Rear-Trigger
- Threaded for accessories

**AURORA**  
TOOLS



Model No.	Max. Pressure PSI	Water	Insulated	Body Material	Promo Price
-----------	-------------------	-------	-----------	---------------	-------------

### VINYL MOLDED COMFORT GRIP

<b>NM814</b>	100	Cold	No	Zinc & Vinyl	<b>7.99</b>
--------------	-----	------	----	--------------	-------------

### HEAVY-DUTY CONSTRUCTION & COMPONENTS

<b>NM815</b>	100	Warm & Cold	Yes	Zinc & ABS	<b>5.99</b>
<b>NM816</b>	100	Warm & Cold	Yes	Zinc & TPR	<b>5.40</b>
<b>NO590</b>	60	Warm & Cold	No	Zinc	<b>5.65</b>

### ERGONOMIC GRIP FOR LONGER USE

<b>NM817</b>	100	Hot & Cold	Yes	Zinc & TPR	<b>8.20</b>
--------------	-----	------------	-----	------------	-------------

## CONTRACTOR DUTY RUBBER HOSES

- All weather flexibility even in sub-zero conditions: -30°C (-22°F) to +82°C (180°F)
- Kink resistant under pressure
- Excellent abrasion resistant outer cover
- 400 PSI maximum pressure
- Easy coiling after use
- Hose Diameter: 5/8"
- Couplings: Brass

**AURORA**  
TOOLS

Model No.	Hose Length'	Promo Price
<b>NO486</b>	25	<b>34.45</b>
<b>NO487</b>	50	<b>53.35</b>
<b>NO488</b>	100	<b>93.25</b>



## HYBRID GARDEN HOSES

- All weather flexibility even in sub-zero conditions: -25°C (-13°F) to +70°C (158°F)
- Lightweight, lay flat and no memory, kink resistant under pressure
- Abrasion resistant outer cover
- UV, Ozone, cracking, chemicals, and oil resistant
- 450 PSI maximum working pressure
- Hose Diameter: 5/8"
- Hose Material: Copolymer

**AURORA**  
TOOLS

Model No.	Hose Length'	Promo Price
<b>NO963</b>	50	<b>41.35</b>
<b>NO964</b>	100	<b>82.35</b>





## Z600 SERIES SAFETY GLASSES

- Frameless design with extended wraparound coverage
- Scratch-resistant polycarbonate lens with UV protection
- Flexible temple design for added durability
- Near total seal of the eye provides superior protection
- Standard(s) Met: CSA Z94.3, ANSI Z87+
- **Must be ordered in multiples of 12**



Model No.	Lens Tint	Promo Price
SAW920	Clear	1.65
SGF242	Smoke	1.85

## LIGHTWEIGHT HIGH-DEXTERITY CUT-RESISTANT GLOVES

- Lightweight for superior dexterity and mobility
- Foam nitrile palm coating provides improved grip
- Palm construction masks dirt and grime for longer wear
- Touchscreen compatible
- Gauge: 18
- Shell Material: HPPE, Nylon, Spandex
- Cut Resistance: ASTM ANSI Level A5



Model No.	Size	Promo Price
SGX787	Small	8.15/Pair
SGX788	Medium	8.15/Pair
SGX789	Large	8.15/Pair
SGX790	X-Large	8.15/Pair
SGX791	2X-Large	8.15/Pair



## GRAND SLAM II BUMP CAPS

- For low-hazard area protection against minor bumps and lacerations
- Hard shell with crown foam pads for maximum comfort and fit
- Super-lightweight
- Well-vented for increased comfort during hot, sunny days



Model No.	Colour	Promo Price
SGC422	Navy Blue	13.29
SGC423	Red	13.29
SGC424	Grey	13.29
SGC425	Black	13.29

## PREMIUM COMFORT COATED GLOVES

- 13-gauge seamless polyester knit provides ultimate dexterity and reduces hand fatigue
- Premium comfort and breathability
- Excellent dry grip
- Durable nitrile coated palm
- Gauge: 13
- EN 388 Performance Levels: 4123
- EN 420 Dexterity Level: 5
- **Must be ordered in multiples of 12**



Model No.	Size	Promo Price
SAO157	Small, 7	0.89/Pair
SAO158	Medium, 8	0.89/Pair
SAO159	Large, 9	0.89/Pair
SAO160	X-Large, 10	0.89/Pair
SAP355	2X-Large, 11	0.89/Pair



## COOLING BANDANAS

- Helps fight heat stress and fatigue
- Soak 2-5 minutes in water to activate
- Remains hydrated for at least 4 hours
- One size fits all
- Material: Cotton



Model No.	Colour	Promo Price
SGO333	Blue	2.70
SGO334	Red	2.70



## MEN'S UTILITY GLOVES

- All purpose glove with unlimited household and shop uses
- Easy entry, elastic cuff designed with TPR (Thermal Plastic Rubber) hook and loop closure provides a secure fit
- Two-way form fitting Spandex top increases ventilation, comfort and fit
- Interior seam stitching prevents snagging
- Reinforced Dura-Fi™ synthetic leather thumb, index and middle fingertips provide strength and protection
- Material: Synthetic Leather/Spandex/Lycra®
- **Must be ordered in multiples of 2**



Model No.	Size	Promo Price
SAN720	Small	19.85/Pair
SAN721	Medium	19.85/Pair
SAN722	Large	19.85/Pair
SAN723	X-Large	19.85/Pair
SAN724	2X-Large	19.85/Pair



## TRIANGULAR REFLECTOR KIT

- Ideal for increasing visibility around disabled vehicles
- Fast and easy to set up and stow away
- Weighted base provides additional stability
- Instructions for proper use are printed on the case and on each triangle
- Kit includes three triangles and a red carry case
- Meets DOT FMVSS 125 standards



Model No.	Promo Price
<b>SGD773</b>	<b>34.55</b>

## FLAGGING TAPE

- Quick and easy way to lay out boundaries
- Non-adhesive
- Brightly coloured tape offers maximum visibility
- Width: 1.1875"
- Material: Vinyl
- **Must be ordered in multiples of 10**



Model No.	Colour	Length'	Promo Price
<b>SGQ805</b>	Fluorescent Orange	164	<b>2.25</b>
<b>SGQ807</b>	Fluorescent Pink	164	<b>2.25</b>
<b>SHB928</b>	Fluorescent Green	164	<b>2.25</b>
<b>SHB929</b>	Fluorescent Yellow	164	<b>2.25</b>
<b>SGQ806</b>	Red	164	<b>2.25</b>
<b>SGQ808</b>	Blue	328	<b>2.40</b>

## SAFETY BATON LIGHT

- High visibility LED light source to safely direct traffic
- Durable weather resistant design with carrying strap
- Two light modes include Steady On and Flashing
- Requires (2) D batteries
- Light Colour: Orange
- Length: 21"



Model No.	Promo Price
<b>SGW959</b>	<b>10.05</b>

## BARRICADE TAPE

- Warns against hazards by restricting entry to dangerous areas
- Ideal for both indoor and temporary outdoor usage
- Made of polyethylene
- Standard duty - 1.5 mil



Model No.	Message	Colour	Roll Size	Promo Price
<b>SEK397</b>	Caution	Black on Yellow	3" x 1000'	<b>8.25</b>
<b>SEK398</b>	"Attention"	Black on Yellow	3" x 1000'	<b>8.25</b>
<b>SEK399</b>	Danger	Black on Red	3" x 1000'	<b>8.25</b>
<b>SDS739</b>	Danger	Black on Yellow	3" x 1000'	<b>8.25</b>

## TRAFFIC CONE

- Fluorescent orange colour provides high visibility
- Interlocking cone and base
- Can withstand temperatures -10°C to 60°C
- Material: EVA Plastic with Rubber base
- Standard(s) Met: Ontario & Alberta Ministry of Transport Regulations



Model No.	Height"	Base Dim. W" x L"	Collar"	Promo Price
<b>SGU800</b>	28	14.17 x 14.17	4	<b>18.00</b>

## 6" TRAFFIC CONE

- 1 piece lightweight PVC construction offers flexibility and durability
- Ideal for sporting events, driver's education courses, and marking indoor hazards
- Base Dimensions: 5-7/8" W x 5-7/8" L
- Colour: Orange



Model No.	Promo Price
<b>SCG920</b>	<b>4.25</b>

## HYDRATION DRINK FREEZE POPS

- By exceeding OHS recommendations for heat stress prevention, provides the body with crucial vitamins and minerals
- Caffeine-free, with no artificial colours
- Formulated and made in Canada
- Flavour: Mixed Flavours
- Format: Frozen
- Serving Size: 66 ml
- Servings/Case: 252



Model No.	Promo Price
SHI657	169.00/Case

## CHILL-ITS® 6665 COOLING VESTS

- Lightweight, durable and washable
- V-neck with zipper closure
- Water-repellent liner
- Soak in cold water 2-5 minutes to activate
- Enjoy cooling relief and comfort for up to 4 hours
- Reusable, just re-soak
- High Visibility Lime-Yellow



SAP936

Model No.	Colour	Promo Price
SAP936	Medium	55.99
SAP937	Large	55.99
SAP938	X-Large	55.99
SAP939	2X-Large	55.99
SEC687	3X-Large	55.99

## CHILL-ITS® 6602 COOLING TOWELS

SEI753



- A hyper-evaporative poly vinyl acetal (PVA) material that retains water while remaining dry to the touch to provide sweet cooling relief
  - Activates quickly and easily when run under water for one minute
    - Wear for hours, or wipe off for quick relief
  - Lightweight and low profile for use with hard hats and helmets
    - Reusable, just re-soak
    - Machine washable
- Must be ordered in multiples of 4



Model No.	MFG No.	Colour	Promo Price
SEB126	12420	Blue	8.49
SEI753	12439	Hi-Vis Lime	8.49
SEI754	12441	Hi-Vis Orange	8.49
SEI755	12442	Pink	8.49
SEI756	12438	Grey	8.49

## GLOWEAR® 8005 HIGH VISIBILITY NECK SHADE

- Elastic design fits most hard hats, including standard and full brim designs
- Plastic clips provide secure fit
- ANSI-compliant reflective material set on contrasting background



SGP157



SGP156

Model No.	Colour	Promo Price
SGP157	Hi-Vis Orange	9.99
SGP156	Hi-Vis Lime	9.99

## CHILL-ITS® 6615 COOLING DURAGS

SEC679



- Hi Cool® moisture management performance fabric transports moisture away
  - Comfortable to wear under hats, helmets, or alone
  - Absorbent terrycloth band
    - Elasticized back for a great fit
  - Machine washable

SEC675



Model No.	Colour	Promo Price
SEC675	Blue	9.49
SEC676	Green Camo	9.49
SEC678	Flames	9.49
SEC679	High Visibility Lime-Yellow	9.49
SEC680	Navy Western	9.49
SEC681	Red Western	9.49

## CHILL-ITS® 6630 COOLING SKULL CAPS

- Hi Cool® moisture management performance fabric transports moisture away
- Comfortable to wear under hats, helmets, or alone
- Wide, absorbent terrycloth headband
- Machine washable
- Technology: High Performance Material



SEC705



SEC707

Model No.	Colour	Promo Price
SEC704	Blue	9.75
SEC705	Green Camo	9.75
SEC707	Flames	9.75
SEC709	Navy Western	9.75
SEC710	Red Western	9.75